



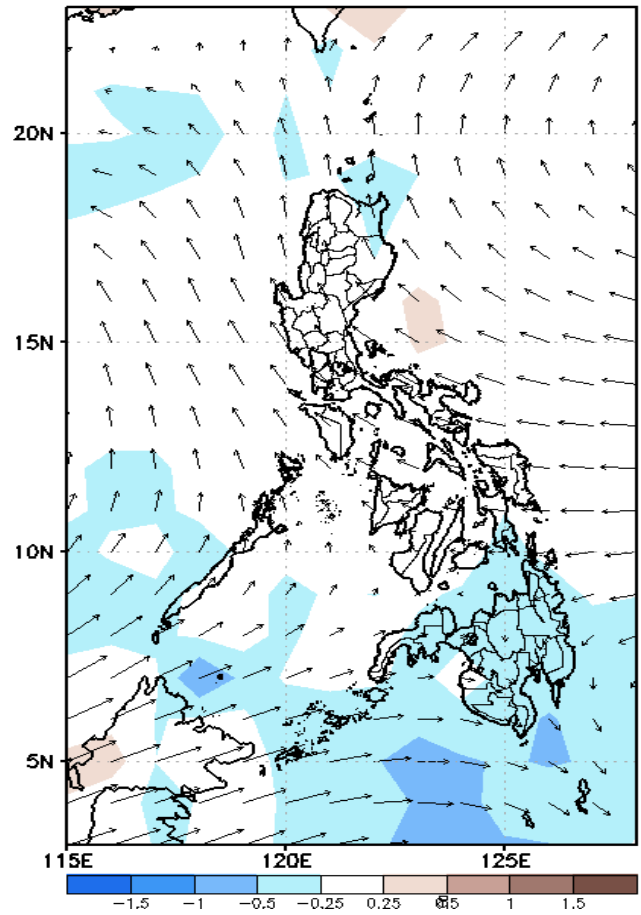
Week 1 & Week 2 Forecast for the Philippines using GEFS Model



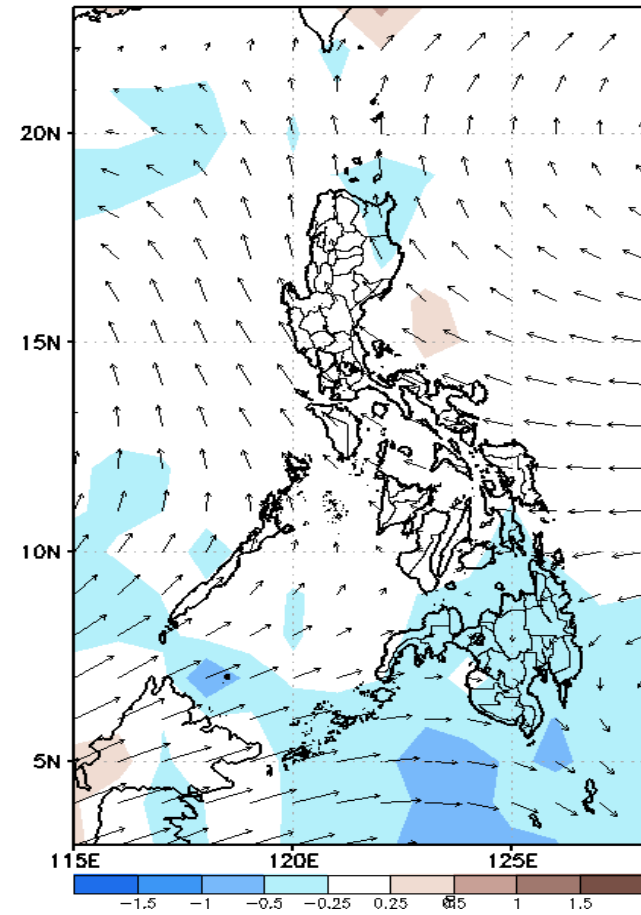
GEFS Week-1 Forecasts: Divergence & Wind Anomaly

Week 2: Apr 27-May 03, 2022

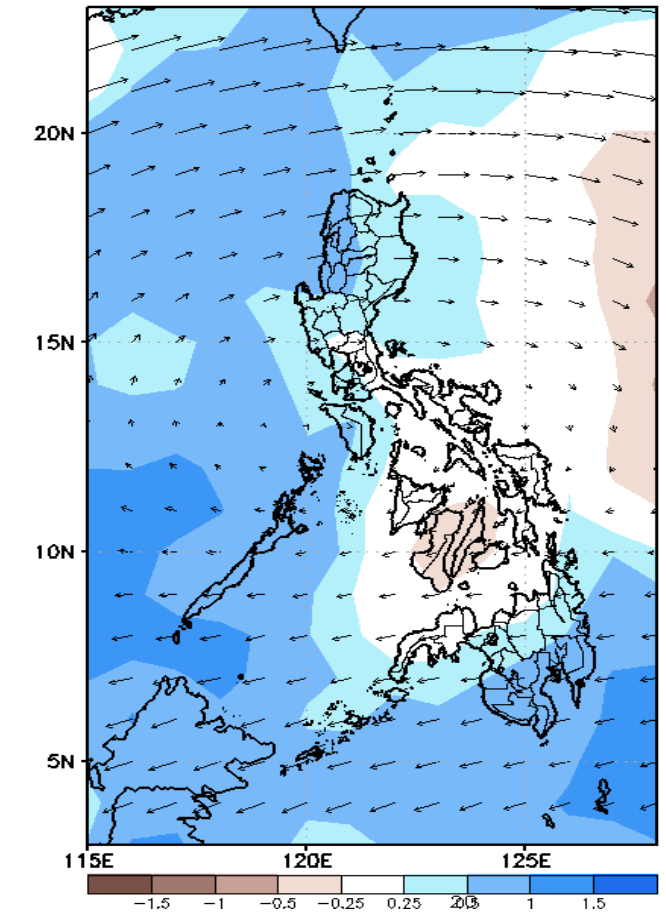
GEFS Week-1 850-hPa Divergence and Wind Anom
Valid: 20220427 - 20220503



GEFS Week-1 700-hPa Divergence and Wind Anom
Valid: 20220427 - 20220503



GEFS Week-1 200-hPa Divergence and Wind Anomaly
Valid: 20220427 - 20220503

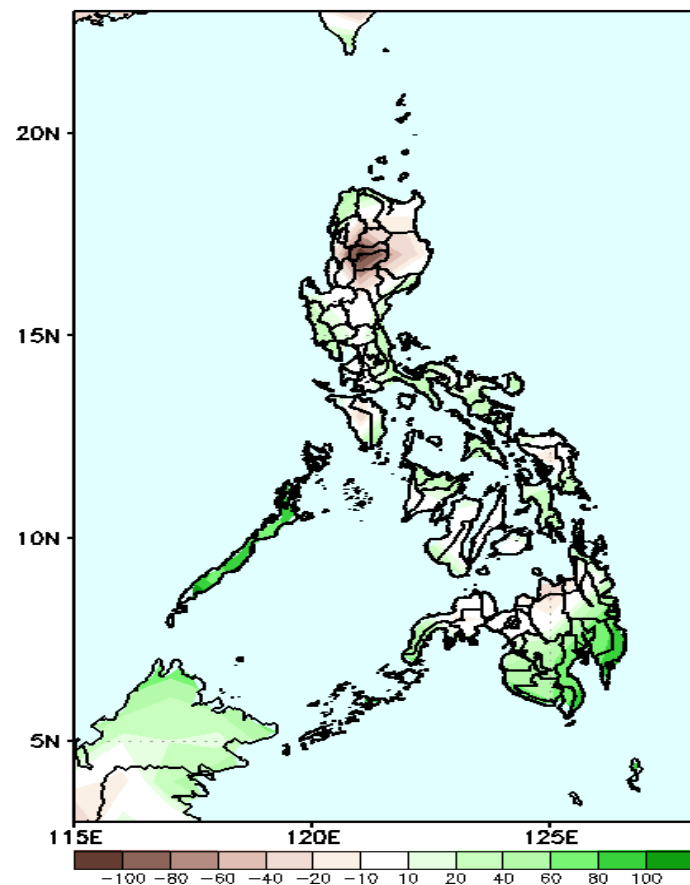


Upper and low level Divergence suggest a likelihood of light to moderate precipitation in most parts of Northern and central Luzon, MIMAROPRA and most parts of Mindanao. Easterlies affecting most parts of the country attributing to warmer temperatures during the forecast period.

Precipitation Anomaly and Exceedance Probability > 25/50 mm

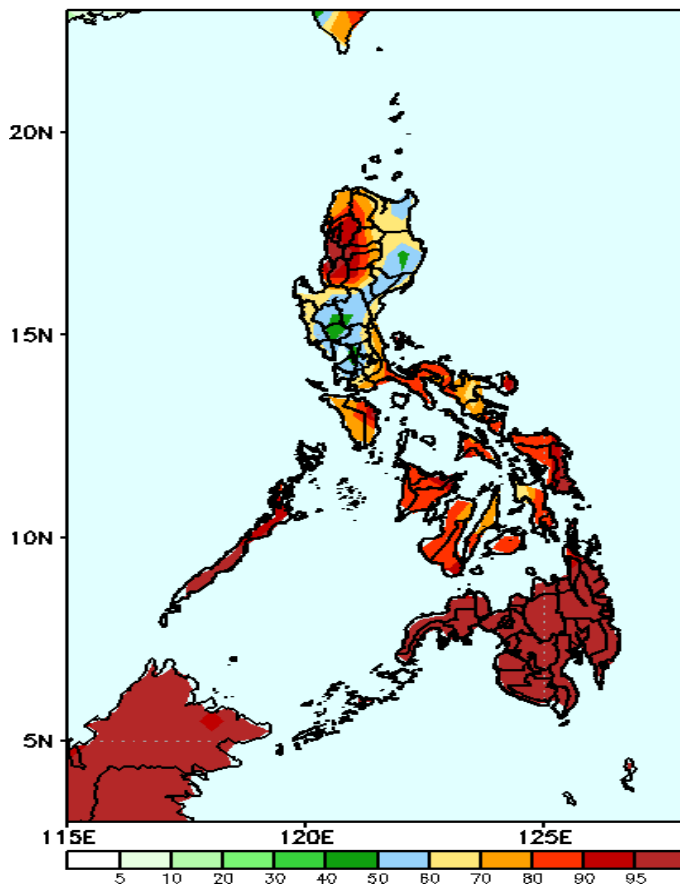
Week 2: Apr 27-May 03, 2022

GEFS Week-1 Precip Anomaly
Valid: 20220427 - 20220503



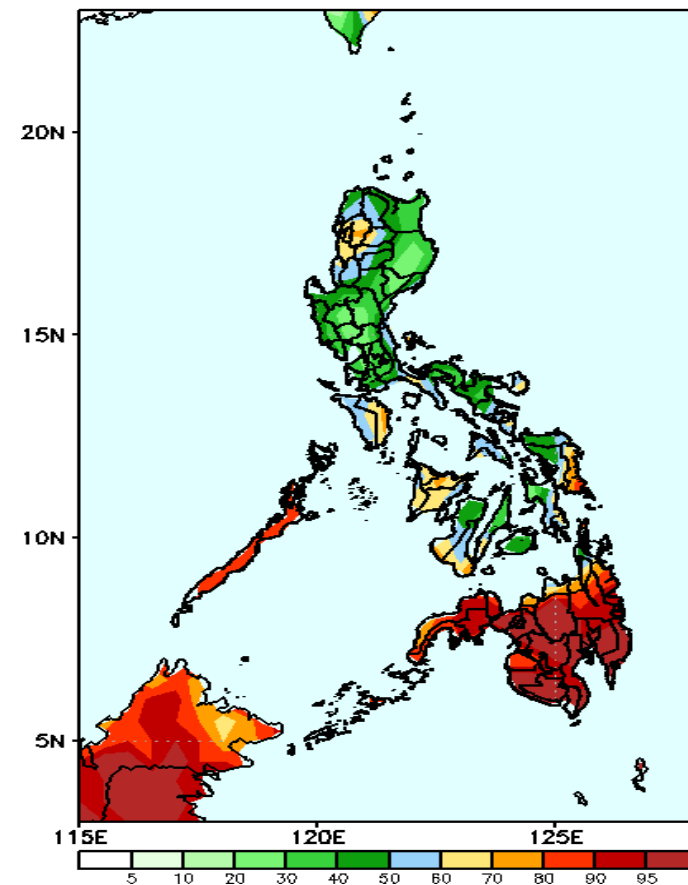
Rainfall deficit of 60-100mm in most parts of Cordillera Region while 40-100mm increase of rainfall in Southern Luzon, most parts of Visayas and southern half of Mindanao during the forecast period.

GEFS Week-1 Exceedance Prob. > 25mm
Valid: 20220427 - 20220503



High probability of rainfall to exceed 25mm in most parts of the country during the forecast period.

GEFS Week-1 Exceedance Prob. > 50mm
Valid: 20220427 - 20220503

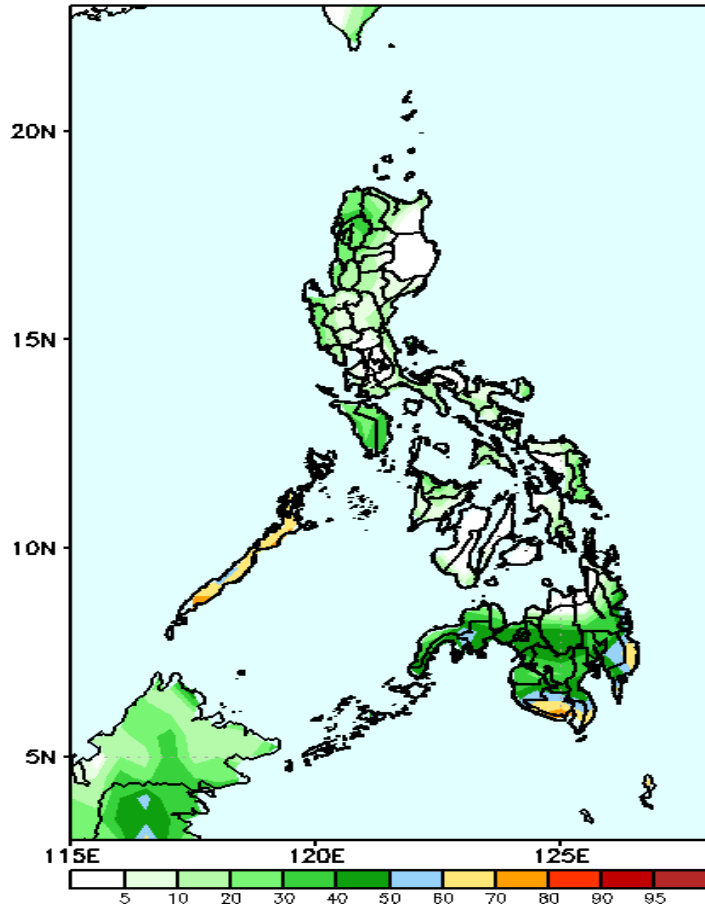


High probability of rainfall to exceed 50mm in most parts of CAR, MIMARORA, Visayas and Mindanao while less likely for the rest of Luzon during the forecast period.

Exceedance Probability > 100/150/200 mm

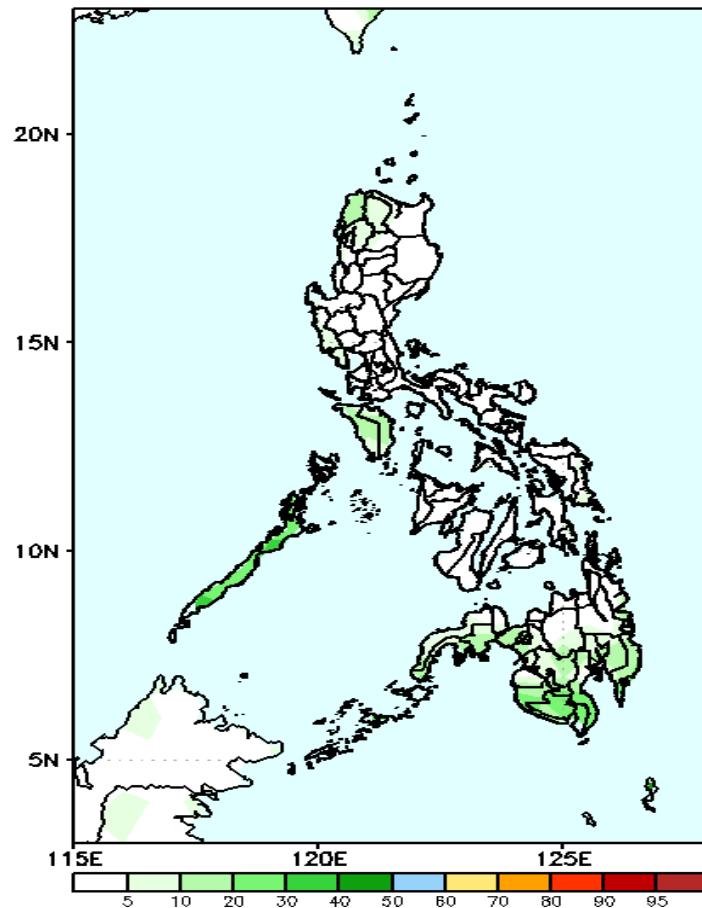
Week 2: Apr 27-May 03, 2022

GEFS Week-1 Exceedance Prob. > 100mm
Valid: 20220427 - 20220503



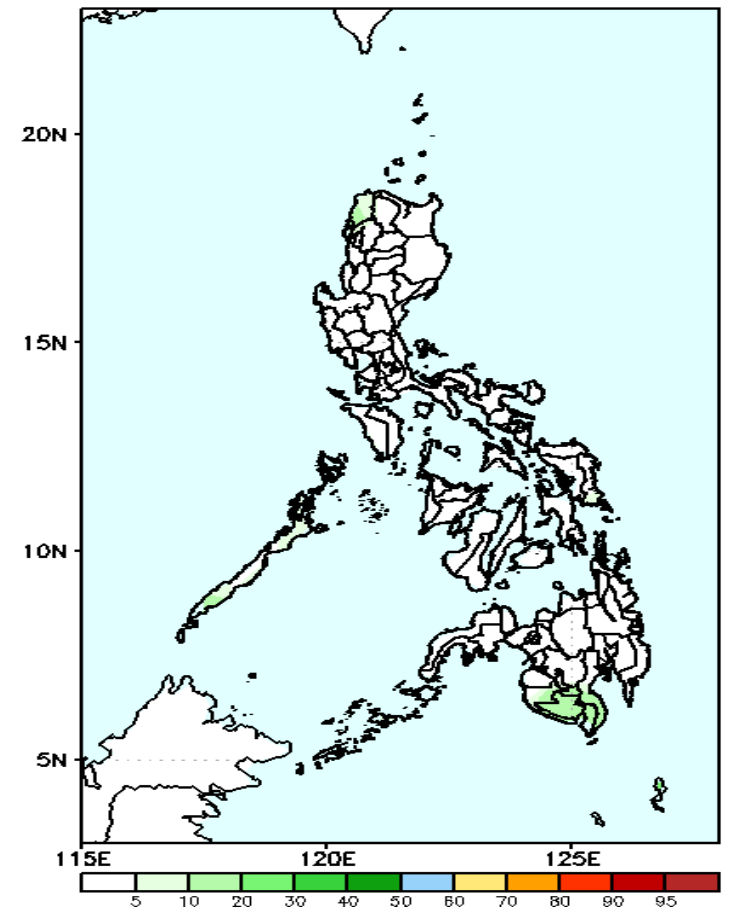
Low probability of rainfall to exceed 100mm in most parts of the country except in Palawan and some areas in Southern Mindanao during the forecast period.

GEFS Week-1 Exceedance Prob. > 150mm
Valid: 20220427 - 20220503



Low probability of rainfall to exceed 150mm in most parts of the country during the forecast period.

GEFS Week-1 Exceedance Prob. > 200mm
Valid: 20220427 - 20220503



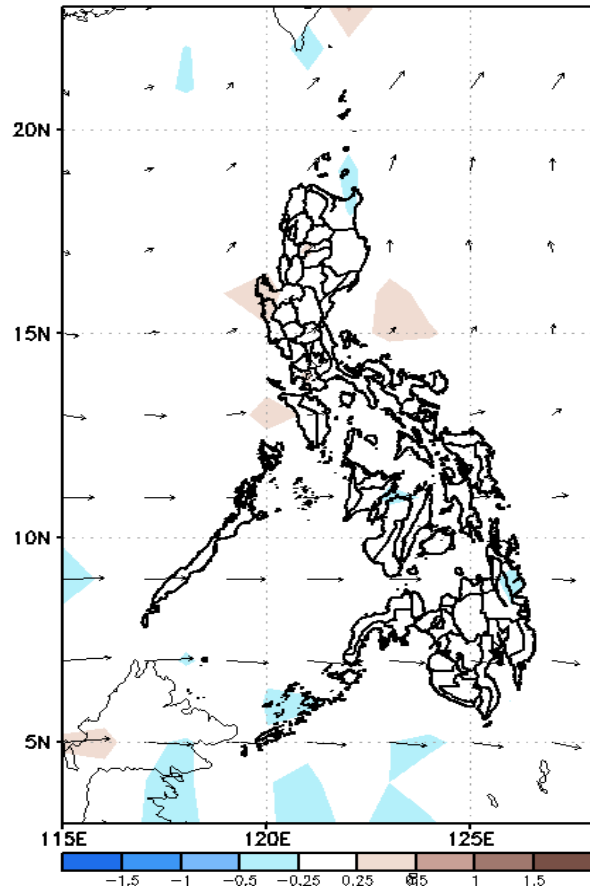
Low probability of rainfall to exceed 200mm in most parts of the country during the forecast period.



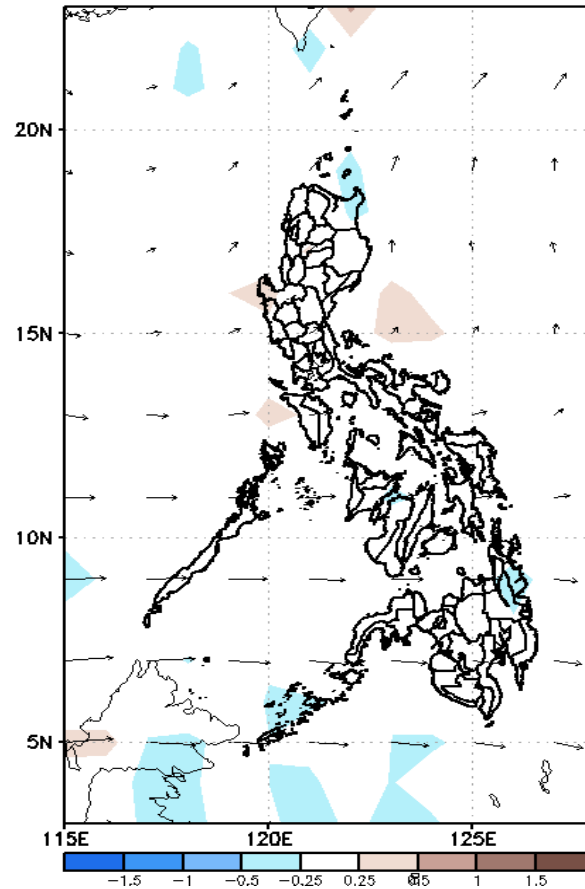
GEFS Week-2 Forecasts: Divergence & Wind Anomaly

Week 2: May 02 - May 08, 2022

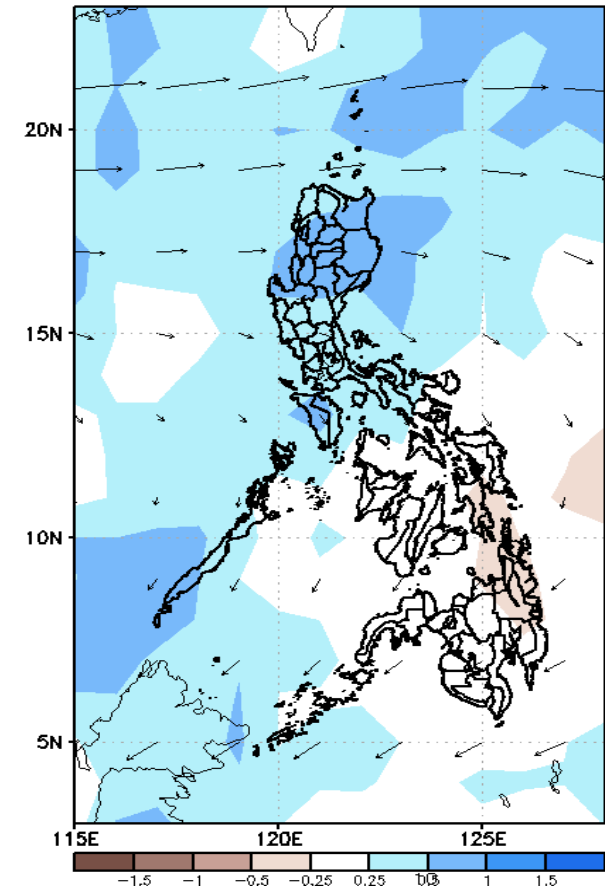
GEFS Week-2 850-hPa Divergence and Wind Anom
Valid: 20220504 - 20220510



GEFS Week-2 700-hPa Divergence and Wind Anom
Valid: 20220504 - 20220510



GEFS week-2 200-hPa Divergence and Wind Anom
Valid: 20220504 - 20220510

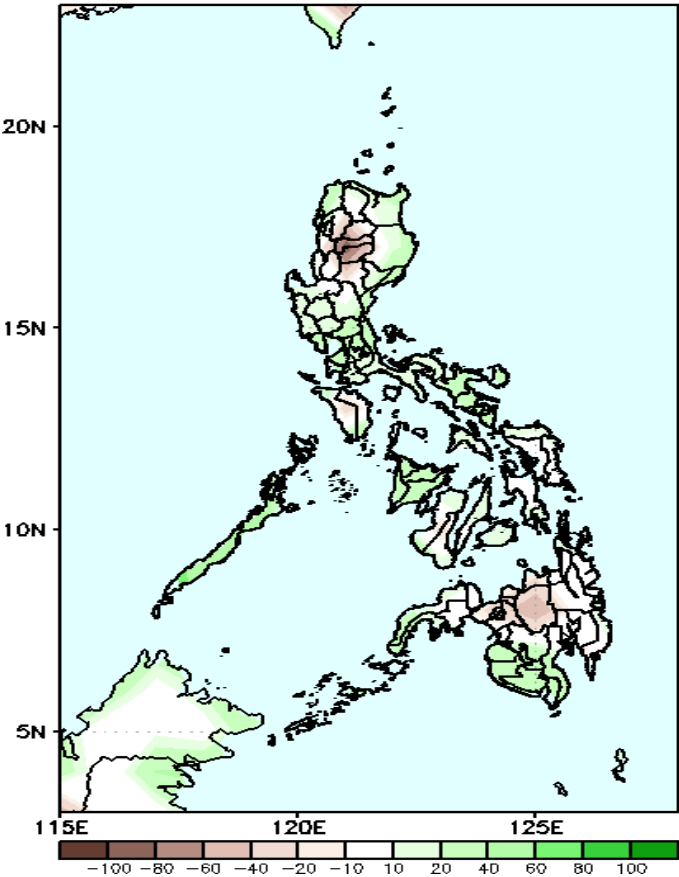


Upper and low level Divergence suggest a likelihood of light precipitation in most parts of Luzon. Easterlies affecting most parts of the country attributing to warmer temperatures during the forecast period.

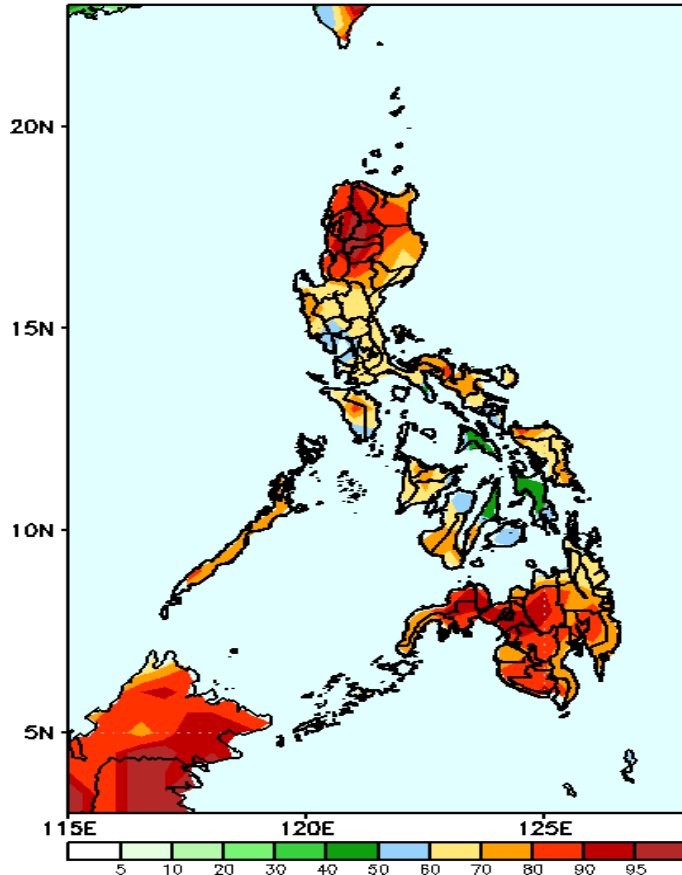
Precipitation Anomaly and Exceedance Probability > 25/50 mm

Week 2: May 04 - May 10, 2022

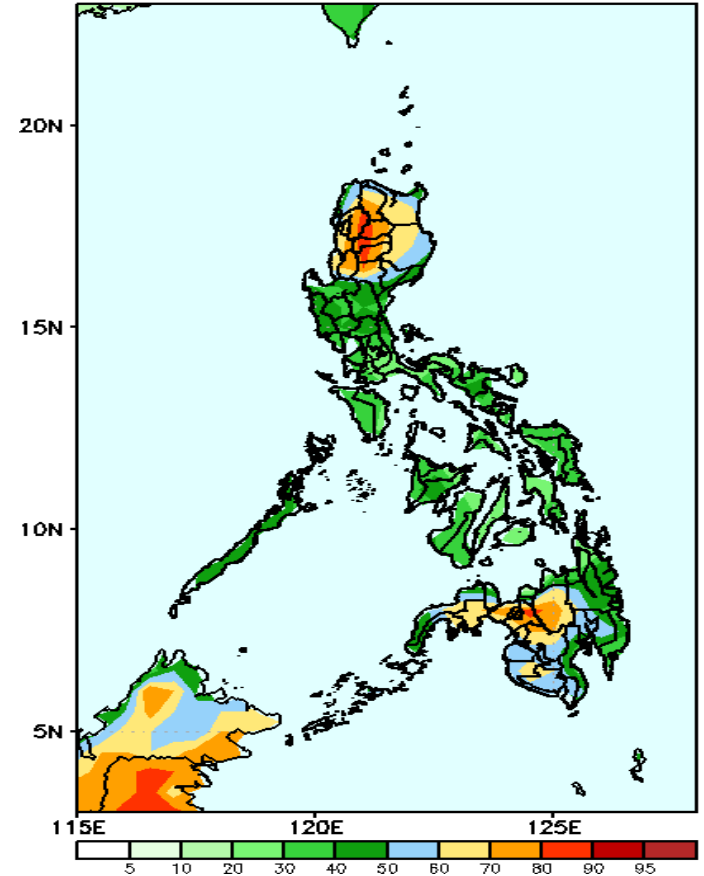
GEFS Week-2 Precip Anomaly
Valid: 20220504 - 20220510



GEFS Week-2 Exceedance Prob. > 25mm
Valid: 20220504 - 20220510



GEFS Week-2 Exceedance Prob. > 50mm
Valid: 20220504 - 20220510



Rainfall deficit of 40-80mm in most parts of CAR and Bukidnon while 30-70mm increase of rainfall for the rest of the country during the forecast period.

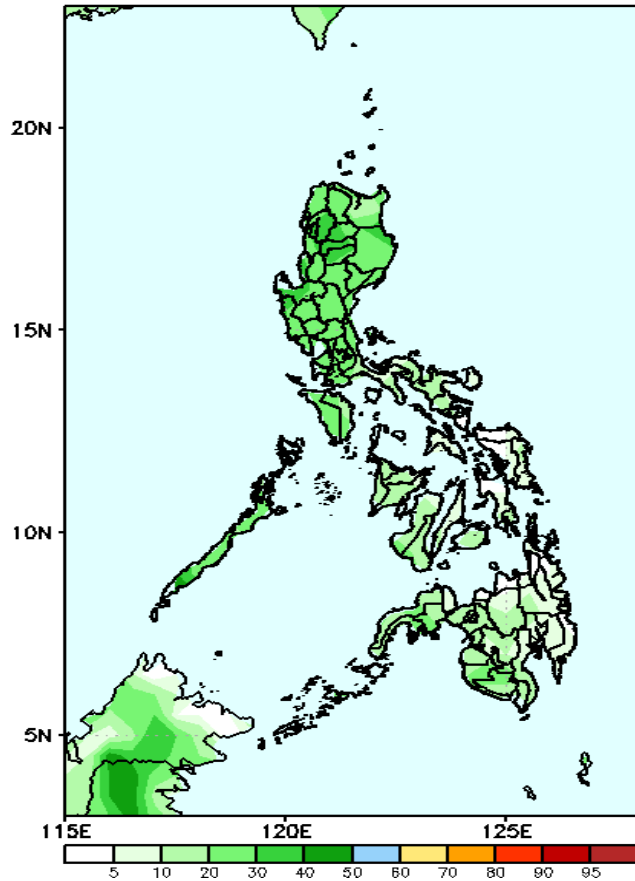
High probability of rainfall to exceed 25mm in most parts of the country during the forecast period.

High probability of rainfall to exceed 50mm in most parts Northern Luzon and Mindanao while less likely for the rest of the country during the forecast period

Exceedance Probability > 100/150/200 mm

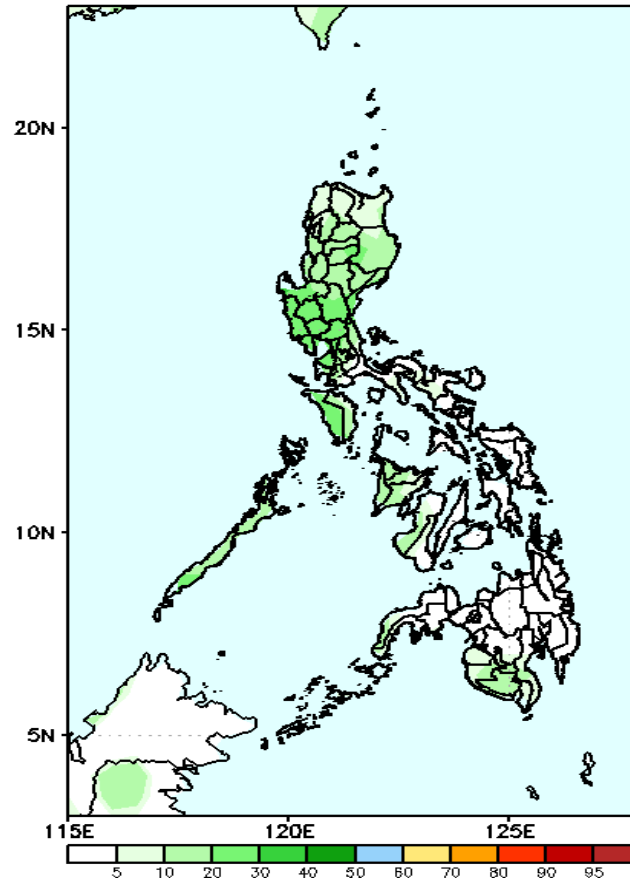
Week 2: May 04 - May 10, 2022

GEFS Week-2 Exceedance Prob. > 100mm
Valid: 20220504 - 20220510



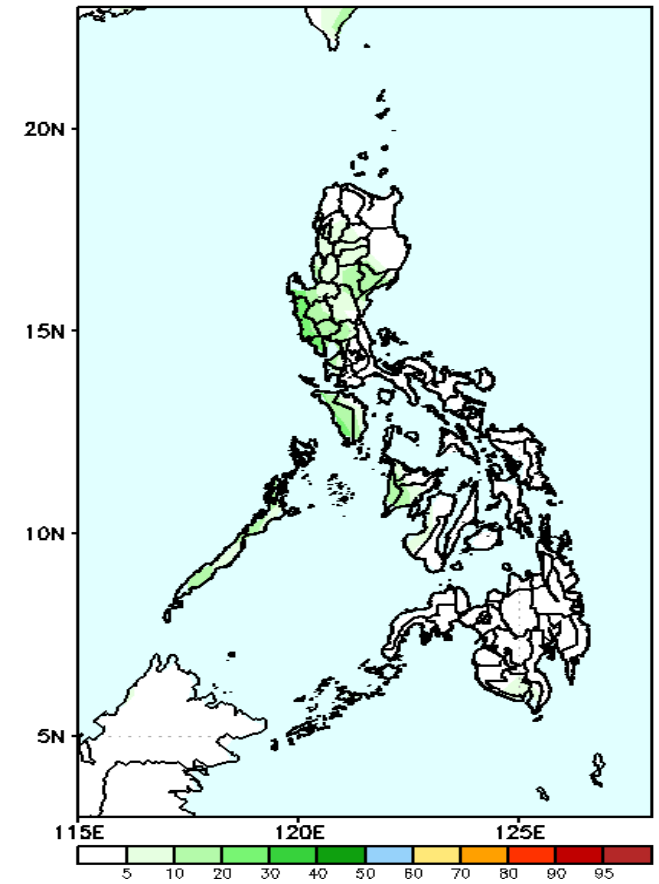
Low probability of rainfall to exceed 100mm in most parts of the country during the forecast period.

GEFS Week-2 Exceedance Prob. > 150mm
Valid: 20220504 - 20220510



Low probability of rainfall to exceed 150mm in most parts of the country during the forecast period.

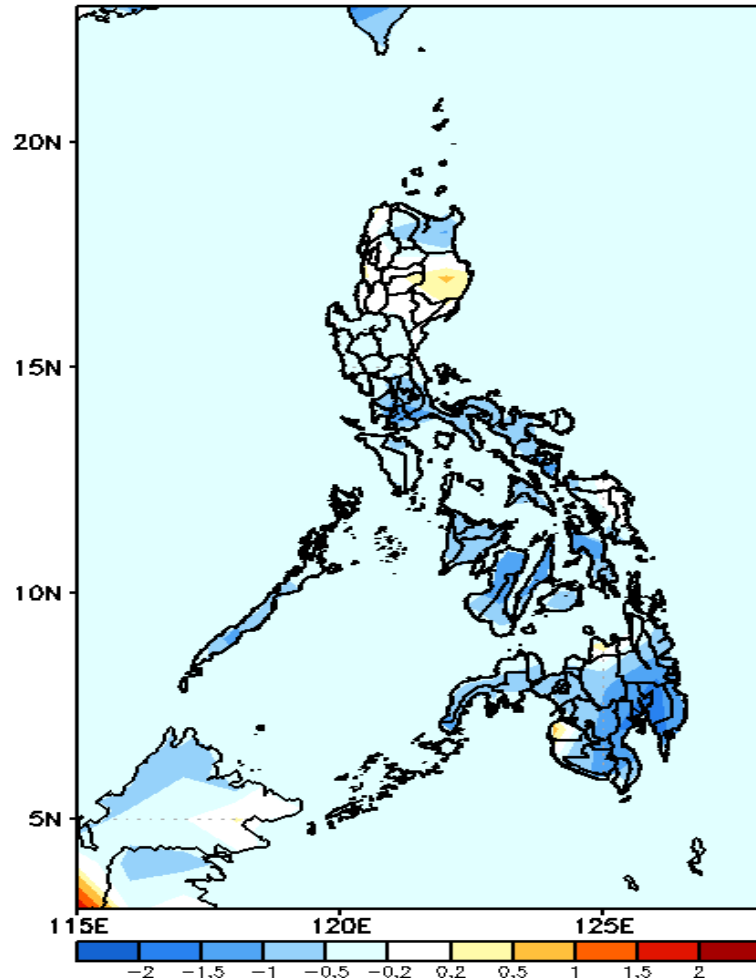
GEFS Week-2 Exceedance Prob. > 200mm
Valid: 20220504 - 20220510



Low probability of rainfall to exceed 200mm in most parts of the country during the forecast period.

GEFS Week-1 & 2 Forecasts: T2m Anomaly

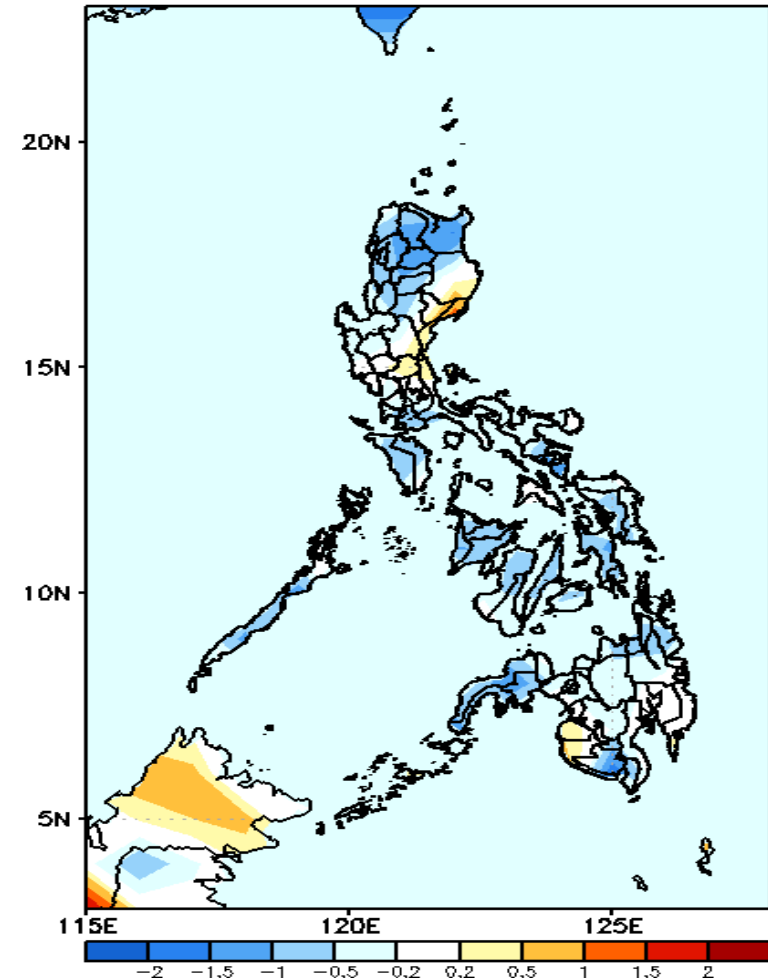
GEFS Week-1 T2m Anomaly
Valid: 20220427 - 20220503



2m Temperature Week 1: Apr 27-May 03, 2022

Slightly cooler to cooler than average surface air temperature will likely experience in most parts of the country except in Isabela, Ilocos & Cordillera Region where average to slightly warmer temperature is expected during the forecast period.

GEFS Week-2 T2m Anomaly
Valid: 20220504 - 20220510



2m Temperature Week 2: May 04 - May 10, 2022

Slightly cooler to cooler than average surface air temperature will likely experience in most parts of the country except Aurora where slightly warmer temperature is expected during the forecast period.

